

Wheatsheaf Farm, North Marston

*Signs and objects found in the house during  
renovations and in the gardens when digging  
the veg patches*

1957 – 2020



Wheatsheaf Inn publican's license board

*Deeds:* 1843 lease, 1862 counterpart lease: John Tattam, Edward Terry; 1874 copy lease: John Tattam, Wroghton & Throlfall; 1890 Mrs E Tattam, Parrot Walker & Co; 1926 counterpart lease, 1937 copy lease: Mrs EL Tattam, The Aylesbury Brewery Company Ltd; 1954 conveyance: Mrs CM Hawker & Mrs WE Brazier, The Aylesbury Brewery Company Ltd; 1957 conveyance: The Aylesbury Brewery Company Ltd, David and Janet Rosina Long    *Some of the publicans:* Dymmock, Woolf, Hayden, Stevens, Watts, Gregory





Left to right: John Woolley, William Tattam and John Price in the Tap Room. The old twirler was of a date coeval with the house. A very local game. The lowest score generally paid for drinks, also for 'even or odd' call to start on the dart board. Numbered 1 to 12.





Mary Stevens and children, circa 1912

Account from Mrs Cheshire: 'My mother [Mary Stevens] started learning lacemaking at the age of five. She was promised if she made so many yards of lace she would get a new pair of boots. She made the lace – but one of her brothers got the boots. We lived at the Wheatsheaf, my father and mother and for some of the time my three sisters, two brothers and my grandmother. We came in 1912 and left I think in about 1929. Before the end wall was rebuilt, before our time that was, they used to brew their own beer there, with two big vats either side of the fireplace. When we left my brother moved all the stuff from the attic, which was always used as a store for all the rubbish, and burnt most of it. I can remember him burning a pile of leather bound books, and lots of twisted straws.'





Codd-neck carbonated drink bottles

In 1872, British soft drink maker Hiram Codd of Camberwell, London, designed and patented a bottle designed specifically for carbonated drinks.

The bottle was designed and manufactured with thick glass to withstand internal pressure, and a chamber to enclose a marble and a rubber washer in the neck.

The bottles are filled upside down, and pressure of the gas in the bottle forced the marble against the washer, sealing in the carbonation.

The bottle is pinched into a special shape to provide a chamber into which the marble is pushed to open the bottle. This prevents the marble from blocking the neck as the drink is poured.

Children used to smash them to release the marbles and play with them.

*Over the years more than 30 bottles have emerged from the Wheatsheaf garden plots, including a set of North & Randall, and three ages of R Whites in two different sizes*



# THE AYLESBURY BREWERY

Co., Ltd.

The Prices to be charged in this Bar are as follows:—

## BULK BEER

	PER PINT
XX (MILD)	1/1d.
B (BITTER)	1/2d.
B.B. (BITTER)	1/4d.
D (BEST BITTER)	1/7d.
JOHN BULL	1/4d.
No. 3 (STRONG)	1/7d.

## MACKESONS STOUT 1/4 BOTTLE BOTTLED BEERS

	PER SMALL BOTTLE
LIGHT ALE	9d.
NUT BROWN	9d.
DOUBLE DIAMOND	1/3d.
JOHN BULL	1/2d.
GRAHAMS LAGER	1/1d. 1/2d.
SPECIAL STOUT	1/-
BASS and WORTHINGTON	1/4d.
GUINNESS	1/3d.

## ARCTIC ALE

WALTON BREWERY, AYLESBURY,  
MAY, 1951.

minerals 6d bottle  
Shandy 1/2 pt  
Cider 1/2 pt

PER NIP  
1/5d.

Charles and Hetty Watts, publicans, had a son (also called Charles) born 29 September 1869 at the Wheatsheaf. The 1871 census shows Charles was aged 1, still living at the Wheatsheaf with his father, mother and now younger brother John, who was 4 months. Charles senior was originally born in Dunton, his relatives lived in that village back to the mid 1700s.

Hetty died quite young not long after having her daughter Margaret, who was baptised in North Marston. The 1881 census shows Charles, now 11, still living at the pub with his father Charles an Innkeeper and widowed, brother John 10 and William 8, plus a lodger. Margaret died aged 2 whilst living with relatives in Suffolk.

Charles Watts senior retired and lived in Oving with his son until his death in 1917, and is buried in Dunton.



**Bought of NORTH & RANDALL**  
Mineral Water Manufacturers.  
**HIGH STREET, AYLESBURY.**  
And at MARKET SQUARE, BICESTER, Oxon. Proprietors: J. S. and N. HOLLAND.

M *Stevens* 1919

Doz. Minerals (La.)		Deposit	
" Minerals (Sp.)		"	
" Syphons		"	
" Dry Ginger		"	
" No. 1 Gin. Br.		"	
Galls. Ginger Beer		"	
" Ginger Wine		"	
Cordials		"	
		" Cases	
		Total	

Doz. Bott. Returnd.		
" Syphons "		
Jars "		
Cases "		
		Total

67

**ZEPPELIN BOMBS!**  
£10,000  
FREE COMPENSATION FUND.  
SEE PAGE FIVE. No. 21686.

**MR. L. GEORGE**  
**ZEPPELIN DESTROYED**  
**CREW KILLED.**

Returning Home After Absence  
Throughout Tuesday Night  
**LONDON RAID: 106 VICTIMS**  
**20 Killed, including 2 Women and Children.**

AMSTERDAM, Thursday

Manufacturers of high-class Mineral and Aerated Waters.  
ESTABLISHED IN AYLESBURY 1851.

All our Goods are Manufactured from the celebrated Water of the Chiltern Hills.

**MINERAL WATERS**  
SODA WATER KOLA  
LEMONADE ORANGE CHAMPAGNE  
DRY GINGER ALE RASPBERRY  
LIME JUICE & SODA, Etc.  
AMERICAN ICE CREAM SODA  
AERATED VIMTO

DRAUGHT GINGER BEER  
CELEBRATED BLUE TOP No. 1 GINGER BEER  
STONE GINGER BEER

SYPHONS OF SODA, SELTZER, LITHIA, &c.

**CORDIALS**  
CHERRY BRANDY, GINGER BRANDY, PEPPERMINT,  
CLOVES, &c.

SPECIAL DRAUGHT GINGER WINE

**NORTH & RANDALL,**  
HIGH STREET,  
AYLESBURY.

1915.

Serious-Chest Diseases often take root from

**Autumn Colds**  
A Common Peril Averted.

The damp days and chilly nights of early Autumn produce numerous ailments of the throat and chest. The best advice for everybody is to stop the first cold by taking Peps. This will prevent serious illness in the winter. If Peps are promptly taken the beginnings of serious throat and lung troubles indicated by chills, irritating hoarseness in the throat, tickling coughs, and tightness in the chest, are immediately checked.

Peps are unique as regards their composition. Their unquestionable superiority over liquid mixtures and old-fashioned cough-drops lies chiefly of all in the fact that their healing essences directly reach the inner tissues of the lungs which are the real seat of chest disease. A liquid medicine is merely swallowed into the stomach, from which there is no passage whatever to the lungs.

Peps are the real breatheable remedy, and on account of their effectiveness are aptly described as

**A PINE FOREST IN EVERY HOME.**

**Peps**  
The Novel Breatheable Remedy

Of all Chemists & Drug Stores, at 1/10, and 2/6 a box.

COMPARE - PRICE





Invented in 1889, Lysol disinfectant proved its worth during the 1892 Hamburg cholera outbreak and again in the 1918 Spanish flu pandemic.

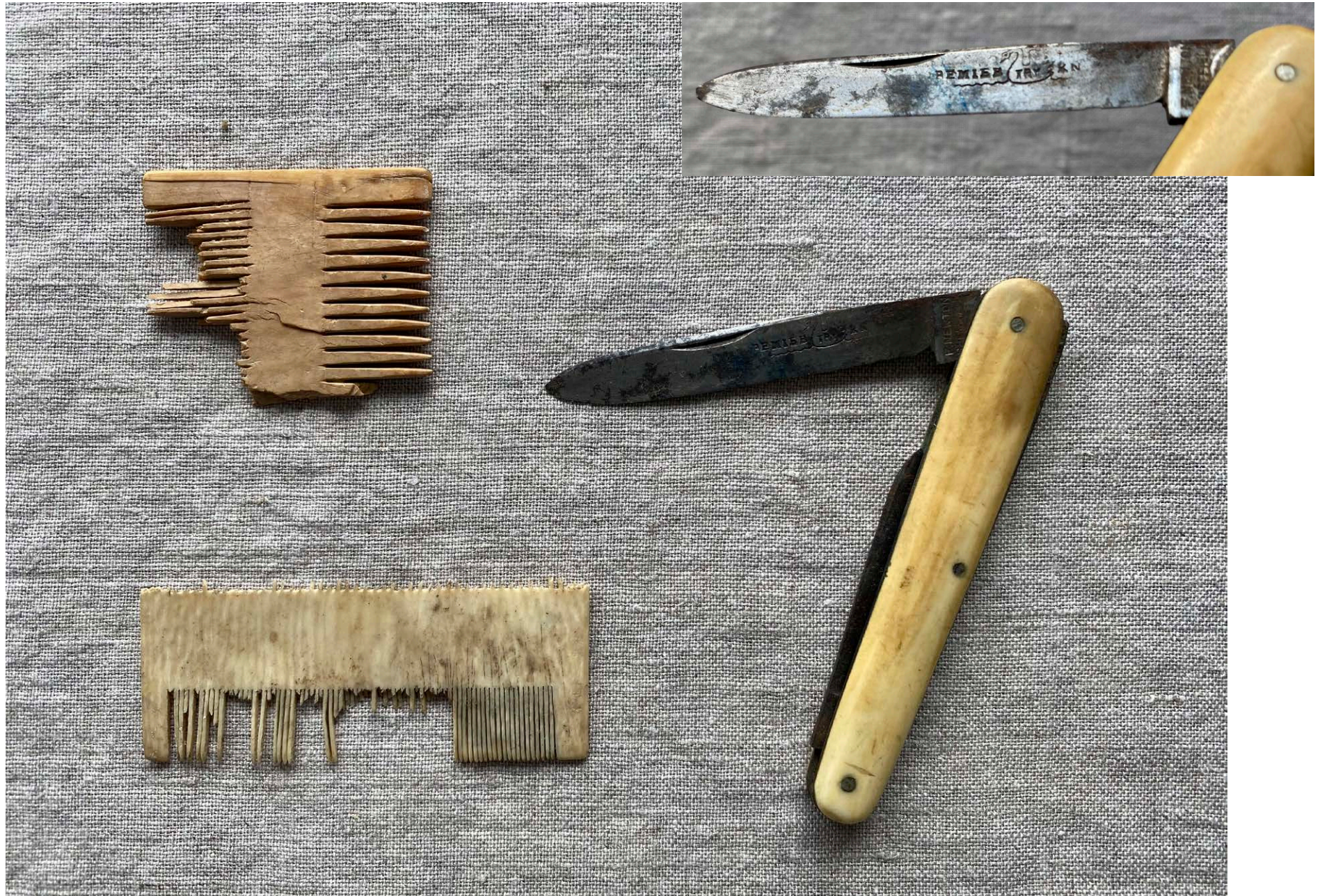






Little metal candle holder dug up in garden





Wooden comb, ivory/bone comb [for nits?], ivory/bone penknife





Bone, horn penknife [stuck shut], metal object [tbc], two hatpins[?], metal object with squashed head [tbc]





Hazelnut shells and nut, metal button with shank, spherical stone, half sphere stone, nails, wooden object [tbc]









Ceramic and glass





Dog's legs





Dog's head, carrying a boat





Ceramic, buttons, glass ball from a pop bottle, buttons, little ceramic knob from a lid, sharpened object [for writing on a slate?]





Our parents called the fern-like pattern on the blue 'tobacco spit' (see also page 10), but I'm not sure if it's that













Pliable lead [?] wire, stone die for game playing, fossil shells in [Bolebec Castle ?] limestone, glass fragment



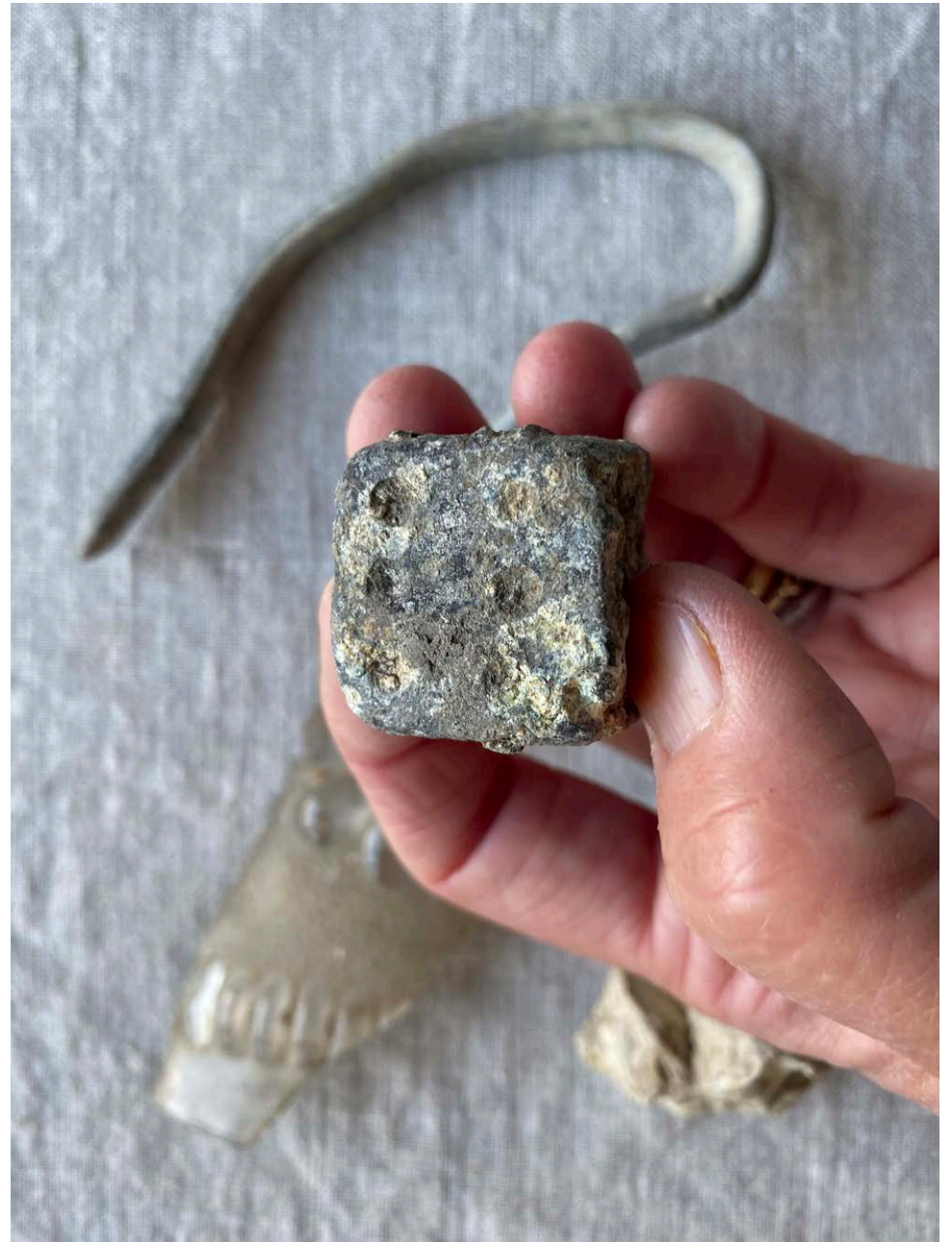


Ceramic handle [?], clay tobacco smoking pipes and bowls





Die sides, one and six







Tobacco smoking pipe detail





Chunk of plaster with animal hair and straw [from loft?]









Painted wall decoration from front sitting room – c. 1800s [?] – cream paint stencilled using a stipple brush onto dark green





Painted wall decoration from front sitting room – reverse side



Edge, with tuft of animal hair in the lime plaster





Painted wall decoration from front sitting room – fragments





Oval and rectangular brass signs removed during rewiring





One hundredweight (1 Cwt), a unit of mass equal to 112 pounds









William & Mary half pennies, both dated 1694





George I coins, dated 1700, 1722





George II coin, dated 1741

George III [pennies?] dated 1806, 1807





Victoria half pennies dated 1861, 1862, 1888





Victoria farthings dated 1861, 1874, 1875





Victoria farthing dated 1885

Victoria [penny?] tbc





George V shilling dated 1914

George VI farthing dated 1943, with 'Jenny' Wren, *troglodytes troglodytes* 39 of 40





Elizabeth II shilling dated 1955

Elizabeth II new half penny dated 1973